



INTERCONTINENTAL MALTA

St. George's Bay | St. Julians

WHERE TO EAT AND DRINK

- Ambrosia
- Café Cordina
- Fontanella
- Two and a Half Lemon

EAT LIKE A LOCAL

- Parangio Lido Terrace
- Rubino
- Paparazzi

SPECIAL PLACES

- Eastern Breeze
- Barracuda

SOMETHING DIFFERENT

- Del Borgo Wine Bar

WHERE TO SHOP

- Republic Street

FIND WHAT YOU'RE LOOKING FOR

- Medina Glass
- Bristol Potteries
- Fruit & Vegetable Market

LOCAL SECRETS

- Ta'Qali crafts village
- Marsaxlokk Market

KEY SHOPPING AREAS

- Baystreet Shopping Mall
- Embassy Shopping Complex

IN THE KNOW

- ▲ Mdina
- Vittoriosa Marina

DID YOU KNOW?

- Azure Window
- Ggantija Temple
- Mosta Dome
- Grand Harbour
- St John's Cathedral

DISCOVER MALTA

- ▲ National Museum of Archaeology
- St. Paul's & St. Peter's Cathedral
- Grand Venetian Harbour

WALKS & TRIPS

- Paceville
- Spinola Palace

WHERE THE CROWDS GO

- Gozo and Comino
- Blue Grotto





MALTA

- Malta is located in the heart of the Mediterranean, 90 kilometers south of Italy.
- The Island benefits from easy access from major European Gateways (1 hour flight from Rome, 2 ½ hour flight from Frankfurt, 3 hour flight from London).
- Vast airline network makes it very well connected, carriers include; Air Malta, Lufthansa, Alitalia, Emirates, British Airways, Turkish Airlines, Brussels Airlines and SAS as well as Ryanair, Vueling, and Easyjet.
- Political and economical stability.
- Temperate climate all year round
- The hotel is situated in Saint Julian's, Malta's premier resort a mere 20 minutes away from Malta International Airport and 15 minutes away from Malta's capital city, Valletta.



MALTA

- 7,000 years of History
- 3 UNESCO World Heritage Sites:
Valletta capital city,
Hal Saflieni Hypogeum
Megalithic Temples of Malta.
- Varied cultural influence Phoenician,
Greek, Roman, Arab, Castilian, French
and British.
- Malta gained independence from
the United Kingdom in 1964
later becoming a republic in 1974.
- Malta was admitted to the United
Nations in 1964, to the European
Union in 2004 and adopted the Euro as
its currency in 2008.



MALTA



La Vallette Hall



Upper Barrakka



Fort Sant'Elmo

MALTA



Monte Kristo

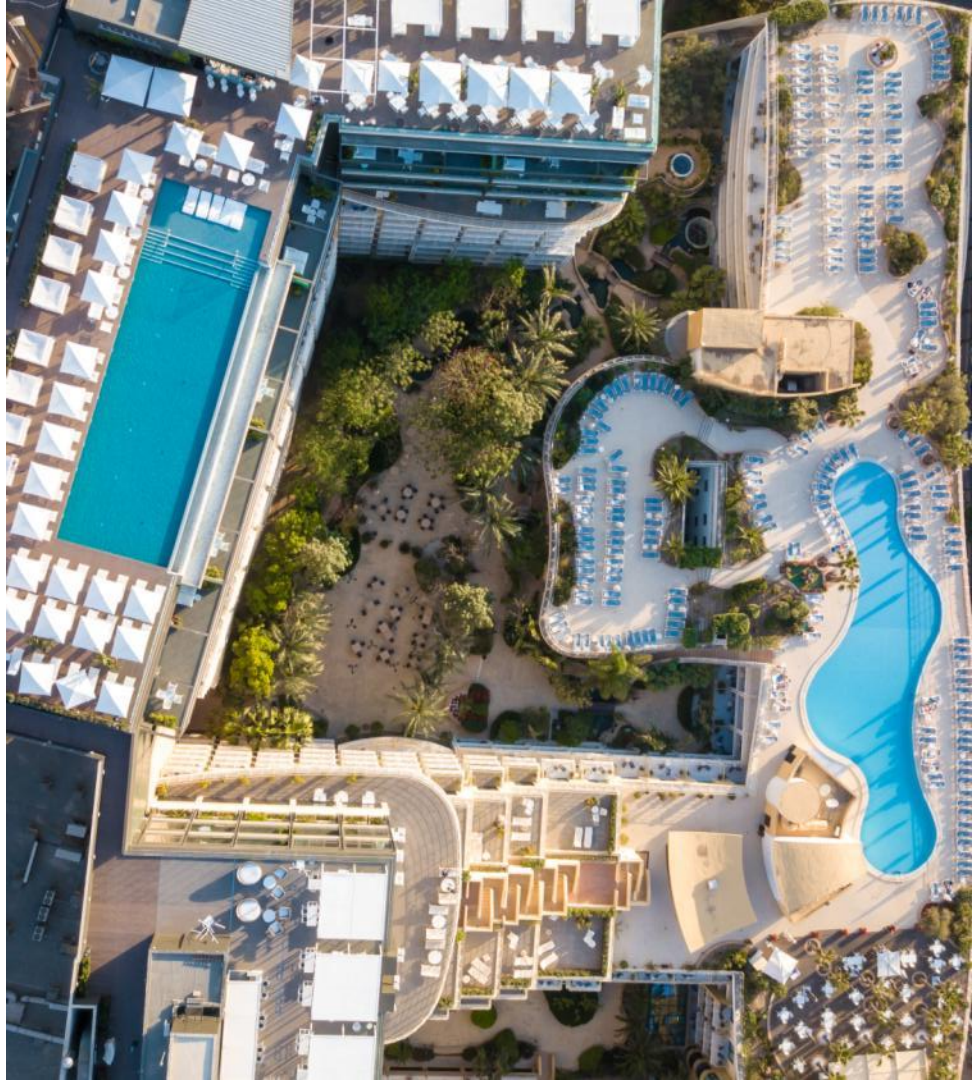


Lime Stone Heritage



Hera Cruise

THE HOTEL



UNIQUE SELLING POINTS

- Malta's leading hotel with 481 guest rooms and 6,000 square meters of conference and event space.
- Recently launched Highline Suites, the island's premier luxury product.
- Club InterContinental lounge with top-class services and bespoke amenities.
- SKYBEACH infinity pool for high end clientele.
- Revamped conference hall offering 3,600 sq meters of meeting and exhibition space.
- 10 restaurant and bars as well as indoor and outdoor solutions for up to 1,000 guests.
- InterContinental Beach Club including private sandy beach.



GUEST ROOMS

- 481 designer-led guest rooms & suites comprising:

351 Classic Rooms (180 twin)

63 Club Rooms

67 Suites incorporating 30 new Highline Suites

- Complimentary WI-FI throughout the property
- Premier suite services include:

Club InterContinental lounge

Dedicated executive boardroom

Private 19th floor infinity pool, bar and restaurant

Guest Rooms



CLASSIC ROOM



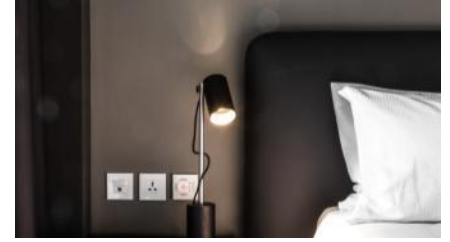


CLUB ROOM

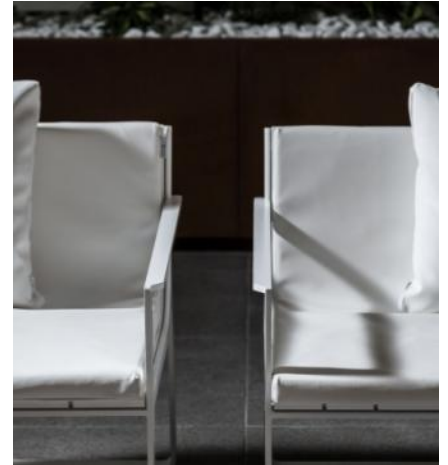




HIGHLINE SUITES

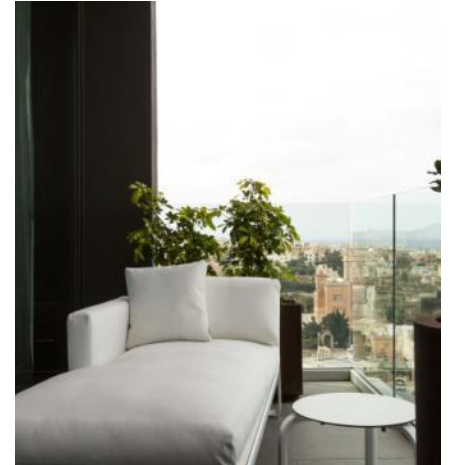


HIGHLINE SUITES



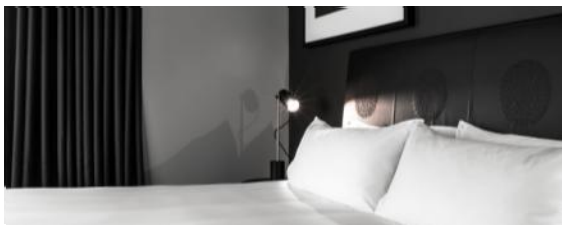


PANORAMIC SUITE





PRESIDENTIAL SUITE





MEETINGS



MEETINGS

- 6,000 square meters of meeting and exhibition space, including newly refurbished 3,600 square meter arena
- 1,215 square meter plenary boasting a 8.5 meter ceiling height
- Total of 24 individual meeting rooms
- Self-sufficient and fully functional conference center with the latest audio-visual requirements
- Capacity of 960 seated for gala dinner
- Adjacent to the Hotel there are 7 Cinemas suites with capacity for up to 350 persons
- Awarded Malta's Leading Business Hotel in 2015, 2016, 2017, 2021 by the World Travel Awards



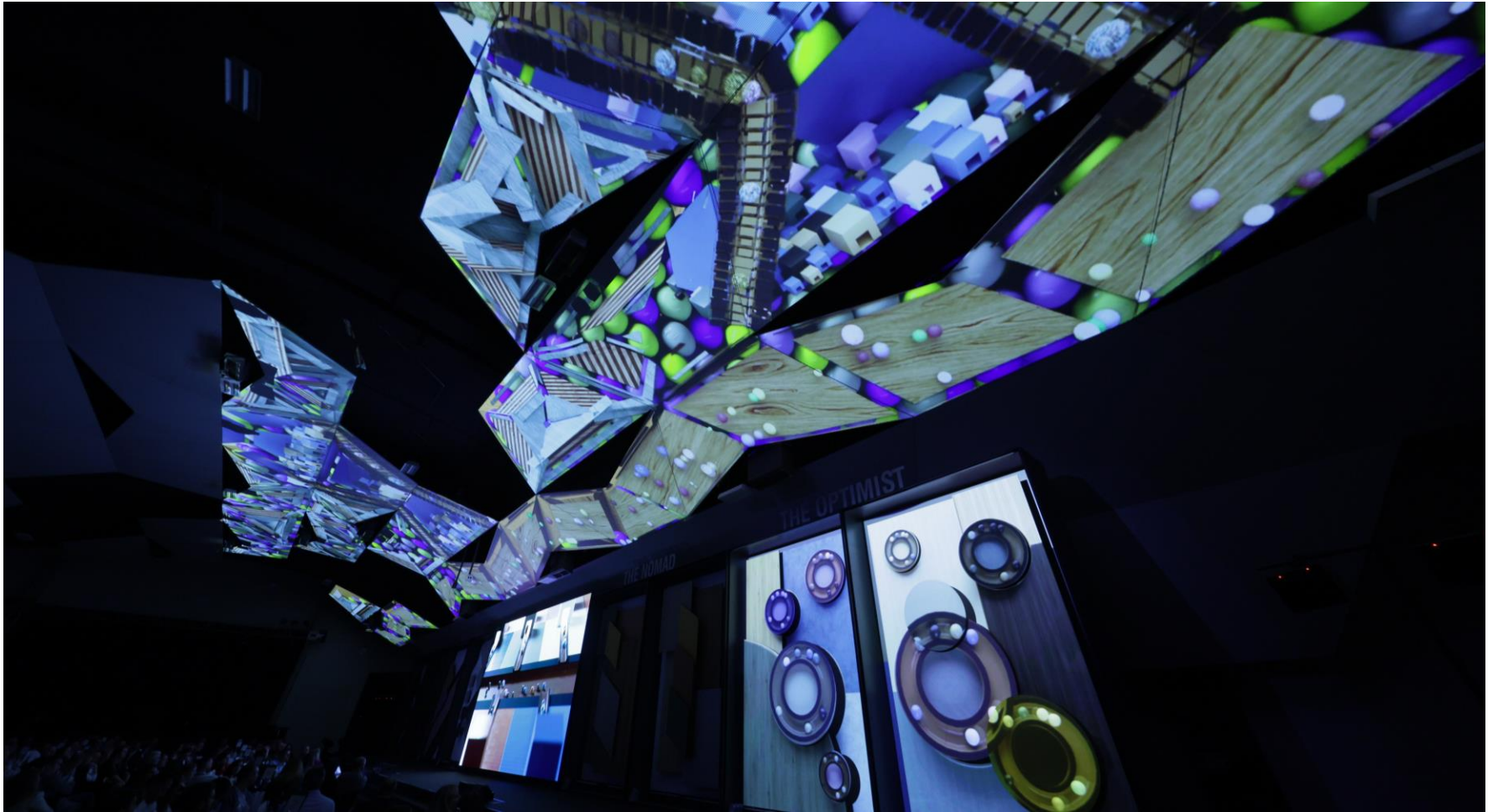
IACC – MAURICE DE CESARE















CETTINA DE CESARE



EXECUTIVE BOARDROOM



MEETING ROOMS

Room Name	Theater Style	Classroom Style	Cocktail Reception	Banquet Style	U Shape	Size (sqm)	Length x Width(m)	Height (m)	Floor
IACC	-	-	3,600	-	-	3,600	n/a	n/a	4th
Maurice De Cesare	1,500	750	2,000	960	141	1,215	45 x 27	5.7x 8.4	4th
Maurice De Cesare foyer	-	-	130	-	-	131	26.8 x 4.9	3.6 - 4.2	4th
Neptune	250	160	400	240	87	352	32 x 11	3.6 - 4.2	4th
Neptune I	60	36	100	60	21	88	8 x 11	3.6 - 4.2	4th
Neptune II	60	36	100	60	21	88	8 x 11	3.6 - 4.2	4th
Neptune III	60	36	100	60	21	88	8 x 11	3.6 - 4.2	4th
Neptune IV	60	36	100	60	21	88	8 x 11	3.6 - 4.2	4th
Europa	-	-	-	-	-	225	24.4 x 9.24	3.6 - 4.2	4th
Europa I	50	27	40	36	21	72	7.8 x 9.2	3.6 - 4.2	4th
Europa II	50	27	40	36	21	72	7.8 x 9.2	3.6 - 4.2	4th
Europa III	50	27	40	36	21	72	7.8 x 9.2	3.6 - 4.2	4th

MEETING ROOMS

Room Name	Theater Style	Classroom Style	Cocktail Reception	Banquet Style	U Shape	Size (sqm)	Length x Width(m)	Height (m)	Floor
Cettina De Cesare	650	320	800	480	114	600	40 x 15	4.1	2nd
Cettina De Cesare I	180	90	200	132	36	174	11.6 x 15	4.1	2nd
Cettina De Cesare II	280	144	400	216	45	248	16.5 x 15	4.1	2nd
Cettina De Cesare III	180	90	200	132	36	174	11.6 x 15	4.1	2nd
Palm Suite	n/a	n/a	280	216	n/a	341	27.5 x 12.4	2.5	7th
Palm Suite I	100	63	100	96	39	141	8.8 x 16	2.5	7th
Palm Suite II	90	48	90	72	27	124	10 x 12.4	2.5	7th
Palm Suite III	40	21	50	48	18	110	8.9 x 12.4	2.5	7th
Saturn	80	51	80	84	36	116	11.6 x 10	3.8	2nd
Saturn I	40	24	40	36	18	58	5.8 x 10	3.8	2nd
Saturn II	40	24	40	36	18	58	5.8 x 10	3.8	2nd

MEETING ROOMS

Room Name	Theater Style	Classroom Style	Cocktail Reception	Banquet Style	U Shape	Size (sqm)	Length x Width(m)	Height (m)	Floor
Jupiter	80	36	60	48	27	76	8.5 x 9	3.8	2nd
Odyssey	15	9	20	12	9	28	3.8 x 7.9	2.4	5th
Apollo	18	9	20	12	9	30	3.8 x 7.9	2.4	5th
Mercury	18	9	20	12	9	30	3.8 x 7.9	2.4	5th
Mars	80	42	100	84	24	139	13 x 10.7	3.9	8th
Venus	110	60	120	108	36	124	15.3 x 8.1	4.4	8th
Venus I	50	27	50	60	21	62	7.7 x 8.1	4.4	8th
Venus II	50	27	50	60	21	61	7.7 x 8.1	4.4	8th
Executive Boardroom	-	-	-	-	-	112	15.5 x 7.2	3.8	17

GASTRONOMY



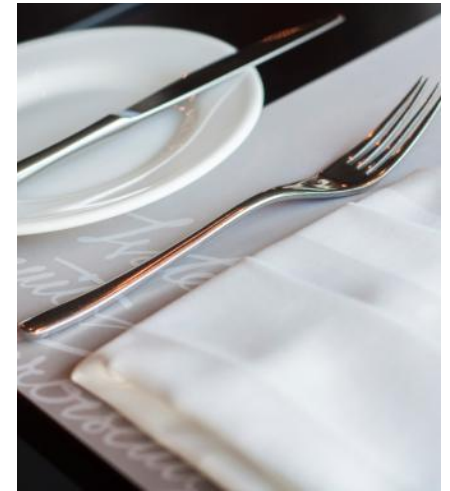
GASTRONOMY

- 10 restaurants & bars
- Diversity of cuisine including Mediterranean, Maltese and contemporary
- Unique seaside, roof top and garden locations
- Capacities from 60 to 1000 persons
- Award-winning chefs at Malta Kulinarija 2018
- Award-winning restaurants (Waterbiscuit & Paranga)

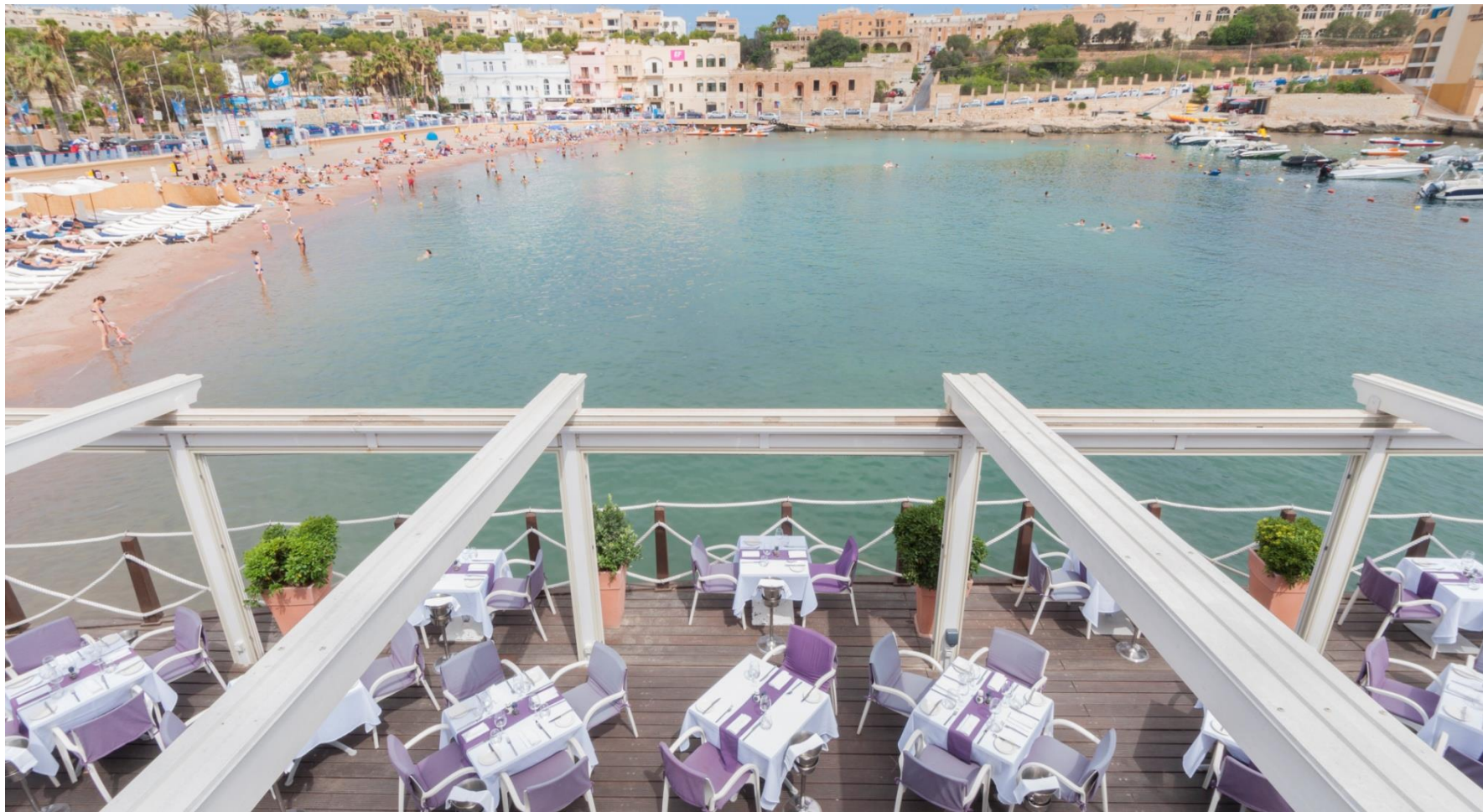


GASTRONOMY

- WATERBISCUIT
- SKYHIGH (seasonal)
- SKYBEACH (seasonal)
- NARCIS POOL BAR (seasonal)
- AL FRESCO GARDENS (seasonal)
- HARRUBA
- PARANGA
- INTERCONTINENTAL BEACH CLUB (seasonal)
- THE BRASS BAR
- LUBELLI













THE BRASS BAR



CLUB INTERCONTINENTAL





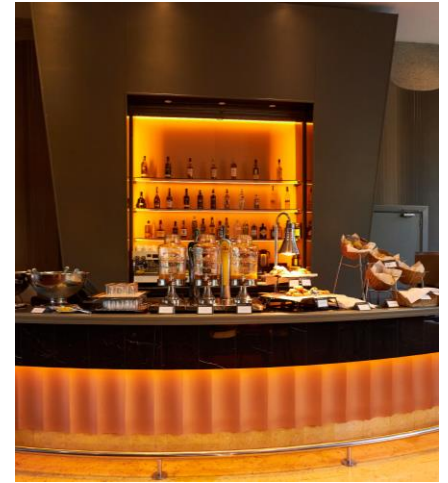
THE OPAL LOUNGE

Experience another level of luxury.

Offering a range of entertainment services and with comfortable indoor and outdoor settings, The Opal Lounge brings quality service and details that truly delight.

INCLUSIONS

- All Fresco Garden Breakfast from 7 am – 10:30 pm (Weather permitting)
- Access to Entertainment room that includes PlayStation, Billiards, Boards
- Games and Movies with latest Netflix selection
- All day refreshments including coffee, tea, soft drinks and cookies
- Pre-dinner cocktails from 5 pm – 7pm including food bites, wine, prosecco, alcoholic drinks international pouring brands and soft drinks
- Access to our beautiful garden
- Complimentary Wi-Fi
- Complimentary international newspapers and magazines



THE OPAL LOUNGE





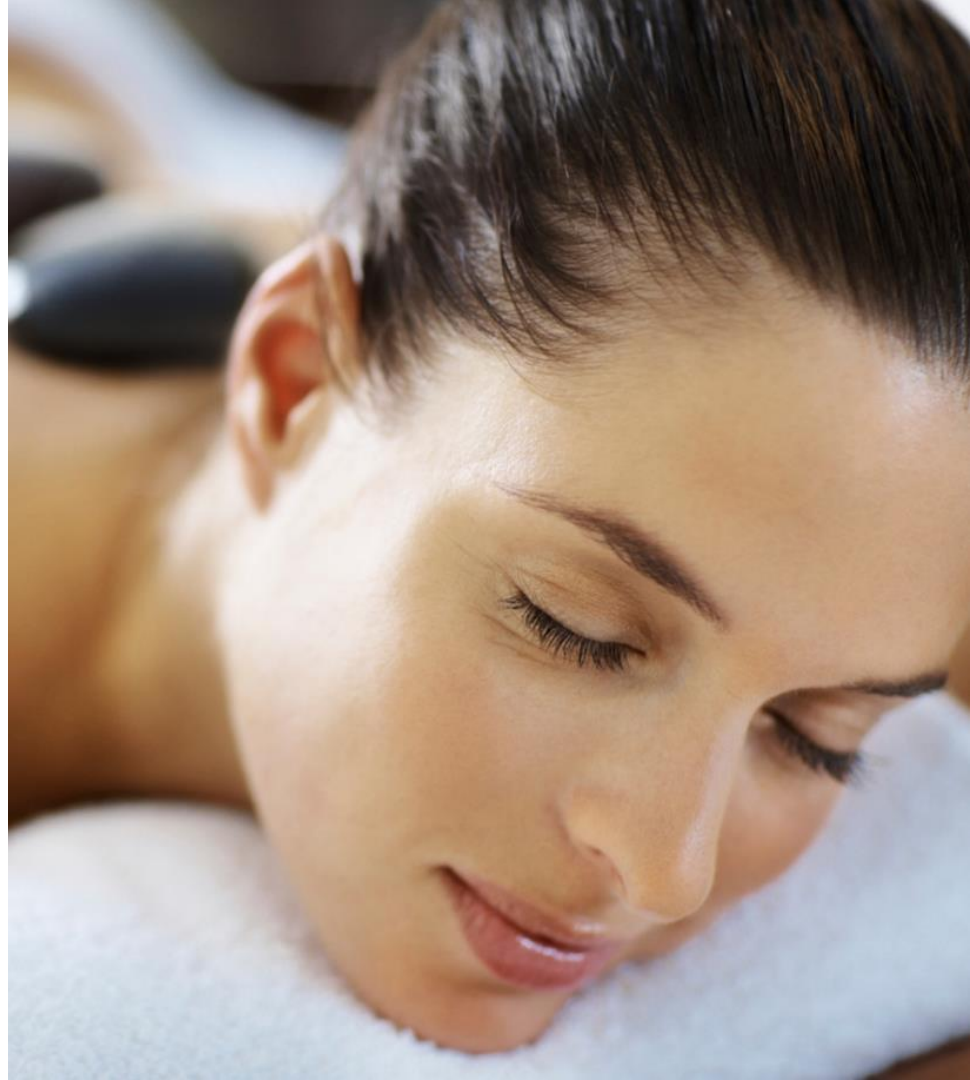








FACILITIES



FACILITIES

- Private sandy beach
- 10th floor lagoon-styled panoramic outdoor pool
- SKYBEACH & SKYHIGH
- Heated indoor pool including sauna and steam room
- Spa and wellness centre encompassing authentic Turkish Hamam
- Expert therapists delivering a variety of treatments including Dead Sea Salt exfoliation and aloe vera face & body masks
- The Island's largest health & fitness centre, Cynergi, a state-of-the-art fully equipped gymnasium including squash courts, aerobics studios and cardiovascular alternatives

















INTERCONTINENTAL.
MALTA